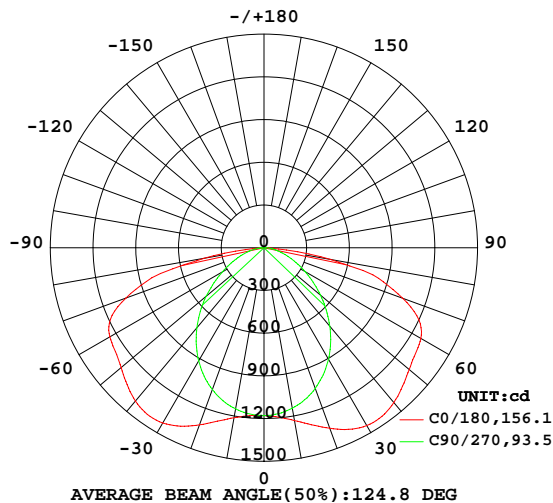


LUMINAIRE PHOTOMETRIC TEST REPORT

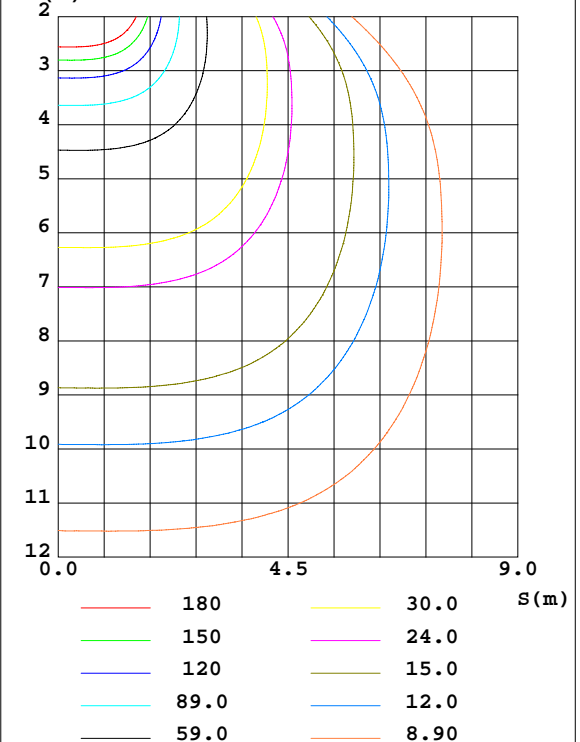
Test:U:229.65V I:0.2537A P:57.346W PF:0.9842 Freq:49.99Hz Lamp Flux:4958.42x1 lm		
NAME:	TYPE:	WEIGHT:
SPEC.:	DIM.: 1285*48*77	SERIAL No.:
MFR.:	SUR.:1.00*0.021	Shielding Angle:

DATA OF LAMP		PHOTOMETRIC DATA Eff: 86.46 lm/W			
MODEL		Imax(cd)	1448	S/MH(C0/180)	1.76
NOMINAL POWER(W)	60	LOR(%)	100.0	S/MH(C90/270)	1.17
RATED VOLTAGE(V)	230.0	TOTAL FLUX(lm)	4958.4	η UP,DN(C0-180)	0.0,49.8
NOMINAL FLUX(lm)	4958.42	CIE CLASS	DIRECT	η UP,DN(C180-360)	0.0,50.2
LAMPS INSIDE	1	η up(%)	0.0	CIBSE SHR NOM	1.50
TEST VOLTAGE(V)	230.0	η down(%)	100.0	CIBSE SHR MAX	1.55

LUMINOUS INTENSITY DISTRIBUTION DIAGRAM



C0 PLANE ISOLUX DIAGRAM (UNIT:lx)



C Range: 0 - 360DEG
C Interval: 22.5DEG
Test Speed: HIGH
Temperature:25.3DEG
Operators:
Test Date:2025-08-20

γ Range: 0 - 90DEG
 γ Interval: 1.0DEG
Test System:EVERFINE GO-2000A_V1 SYSTEM V2.0.406.10
Humidity:65.0%
Test Distance:11.700m [K=1.0000]
Remarks:

ZONAL FLUX DIAGRAM

ZONAL FLUX DIAGRAM:

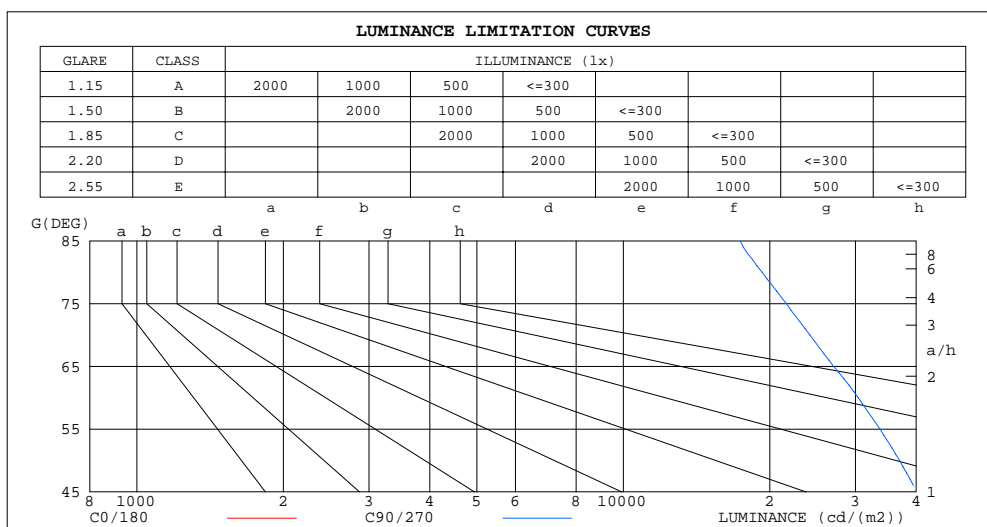
γ	C0	C45	C90	C135	C180	C225	C270	C315	γ	Φ zone	Φ total	$\%lum, lamp$
10	1232	1190	1144	1178	1212	1177	1149	1196	0- 10	112.8	112.8	2.28,2.28
20	1348	1209	1052	1188	1324	1190	1060	1219	10- 20	338.0	450.8	9.09,9.09
30	1442	1229	905.9	1205	1421	1208	917.1	1243	20- 30	555.3	1006	20.3,20.3
40	1419	1219	719.2	1202	1405	1204	732.6	1240	30- 40	733.8	1740	35.1,35.1
50	1331	1141	518.3	1128	1310	1136	529.6	1165	40- 50	832.4	2572	51.9,51.9
60	1272	981.4	331.3	970.5	1250	984.7	336.0	1014	50- 60	844.4	3417	68.9,68.9
70	1036	790.8	180.2	776.0	1032	788.5	184.2	830.1	60- 70	782.8	4200	84.7,84.7
80	472.1	553.8	73.03	553.1	428.3	553.7	75.66	572.2	70- 80	582.9	4782	96.5,96.5
90	6.899	9.966	4.897	5.034	7.741	7.345	7.139	11.68	80- 90	176.0	4958	100,100
100									90-100			
110									100-110			
120									110-120			
130									120-130			
140									130-140			
150									140-150			
160									150-160			
170									160-170			
180									170-180			
DEG	LUMINOUS INTENSITY:cd									UNIT:lm		

C Range: 0 - 360DEG
C Interval: 22.5DEG
Test Speed: HIGH
Temperature:25.3DEG
Operators:
Test Date:2025-08-20

γ Range: 0 - 90DEG
 γ Interval: 1.0DEG
Test System:EVERFINE GO-2000A_V1 SYSTEM V2.0.406.10
Humidity:65.0%
Test Distance:11.700m [K=1.0000]
Remarks:

LUMINANCE LIMITATION CURVES

Test:U:229.65V I:0.2537A P:57.346W PF:0.9842 Freq:49.99Hz Lamp Flux:4958.42x1 lm		
NAME:	TYPE:	WEIGHT:
SPEC.:	DIM.: 1285*48*77	SERIAL No.:
MFR.:	SUR.:1.00*0.021	Shielding Angle:



LUMINANCE cd/(m2)		
G(DEG)	C0/180	C90/270
85	54675	17385
80	124725	19291
75	147622	21624
70	138901	24168
65	130293	27041
60	116743	30392
55	103796	33693
50	94979	36987
45	89255	40144

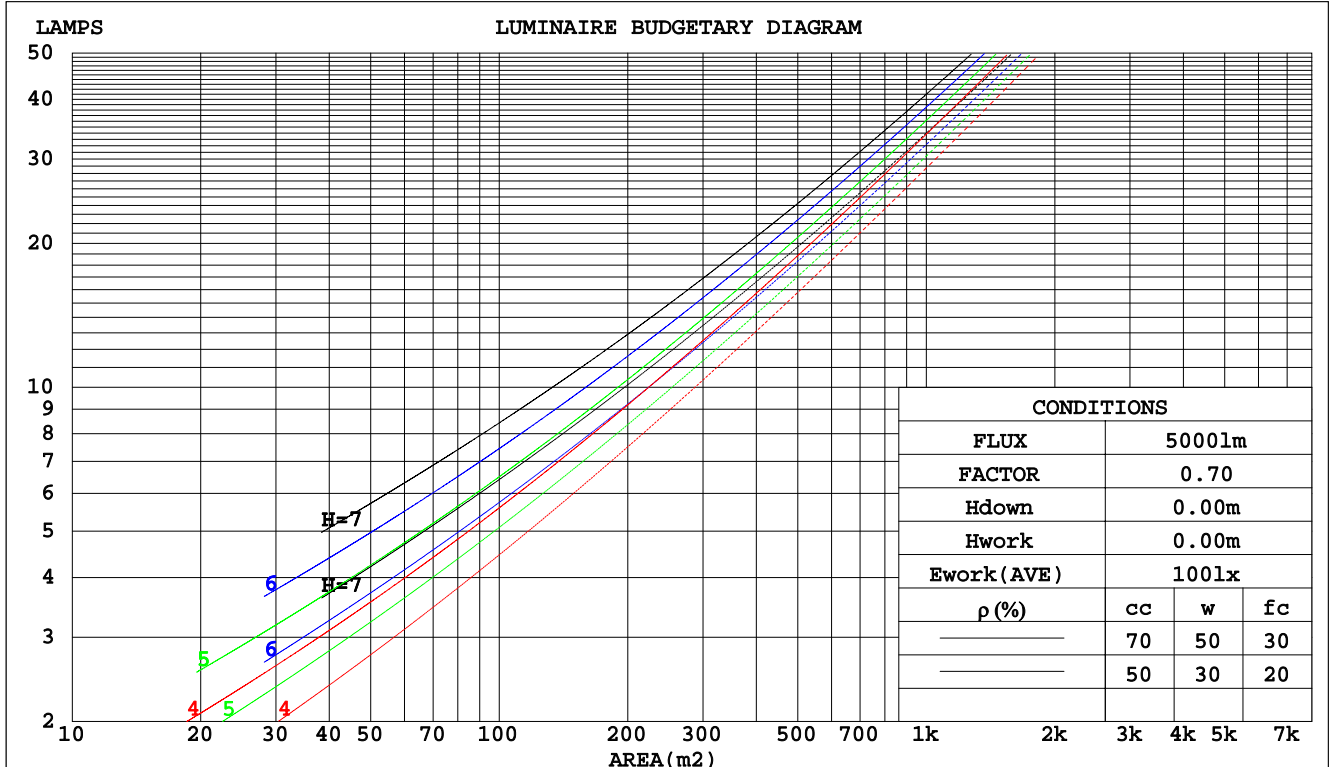
C Range: 0 - 360DEG
C Interval: 22.5DEG
Test Speed: HIGH
Temperature:25.3DEG
Operators:
Test Date:2025-08-20

γ Range: 0 - 90DEG
 γ Interval: 1.0DEG
Test System:EVERFINE GO-2000A_V1 SYSTEM V2.0.406.10
Humidity:65.0%
Test Distance:11.700m [K=1.0000]
Remarks:

CU AND LUMINAIRE BUDGETARY ESTIMATE DIAGRAM

Test:U:229.65V I:0.2537A P:57.346W PF:0.9842 Freq:49.99Hz Lamp Flux:4958.42x1 lm		
NAME:	TYPE:	WEIGHT:
SPEC.:	DIM.: 1285*48*77	SERIAL No.:
MFR.:	SUR.:1.00*0.021	Shielding Angle:

pcc	80%			70%			50%			30%			10%			0
pw	50%	30%	10%	50%	30%	10%	50%	30%	10%	50%	30%	10%	50%	30%	10%	0
pfc	20%			20%			20%			20%			20%			0
RCR	RCR:Room Cavity Ratio			Coefficients of Utilization(CU)												
0.0	1.19	1.19	1.19	1.16	1.16	1.16	1.11	1.11	1.11	1.06	1.06	1.06	1.02	1.02	1.02	1.00
1.0	1.01	.96	.91	.99	.94	.90	.94	.91	.87	.90	.87	.84	.87	.84	.82	.80
2.0	.86	.78	.72	.84	.77	.71	.80	.74	.69	.77	.72	.67	.74	.70	.66	.64
3.0	.74	.65	.58	.73	.64	.57	.70	.62	.56	.67	.60	.55	.64	.59	.54	.52
4.0	.65	.55	.48	.64	.54	.47	.61	.53	.47	.58	.52	.46	.56	.50	.45	.43
5.0	.57	.48	.40	.56	.47	.40	.54	.46	.40	.52	.45	.39	.50	.44	.39	.36
6.0	.51	.42	.35	.50	.41	.34	.48	.40	.34	.47	.39	.34	.45	.38	.33	.31
7.0	.46	.37	.30	.45	.36	.30	.44	.36	.30	.42	.35	.29	.41	.34	.29	.27
8.0	.42	.33	.27	.41	.32	.26	.40	.32	.26	.38	.31	.26	.37	.31	.26	.24
9.0	.38	.29	.24	.38	.29	.24	.36	.29	.23	.35	.28	.23	.34	.28	.23	.21
10.0	.35	.27	.21	.35	.27	.21	.34	.26	.21	.33	.26	.21	.32	.25	.21	.19



C Range: 0 - 360DEG
C Interval: 22.5DEG
Test Speed: HIGH
Temperature:25.3DEG
Operators:
Test Date:2025-08-20

γ Range: 0 - 90DEG
γ Interval: 1.0DEG
Test System:EVERFINE GO-2000A_V1 SYSTEM V2.0.406.10
Humidity:65.0%
Test Distance:11.700m [K=1.0000]
Remarks:

WEC AND CCEC

Test:U:229.65V I:0.2537A P:57.346W PF:0.9842 Freq:49.99Hz Lamp Flux:4958.42x1 lm								
NAME:			TYPE:			WEIGHT:		
SPEC.:			DIM.: 1285*48*77			SERIAL No.:		
MFR.:			SUR.:1.00*0.021			Shielding Angle:		

pcc	80%			70%			50%			30%			10%			0
pw	50%	30%	10%	50%	30%	10%	50%	30%	10%	50%	30%	10%	50%	30%	10%	0
pfc	20%			20%			20%			20%			20%			0
RCR	RCR:Room Cavity Ratio						Wall Exitance Coefficients(WEC)									
0.0																
1.0	.364	.207	.066	.357	.203	.065	.343	.197	.063	.331	.191	.061	.319	.185	.060	
2.0	.333	.183	.056	.327	.180	.055	.315	.175	.054	.304	.170	.053	.293	.166	.052	
3.0	.302	.161	.048	.297	.159	.048	.286	.155	.047	.276	.151	.046	.267	.148	.046	
4.0	.275	.143	.042	.270	.141	.042	.260	.138	.041	.251	.135	.041	.243	.132	.040	
5.0	.251	.128	.037	.246	.127	.037	.238	.124	.036	.230	.121	.036	.223	.119	.036	
6.0	.230	.116	.033	.226	.114	.033	.219	.112	.033	.212	.110	.032	.205	.108	.032	
7.0	.213	.105	.030	.209	.104	.030	.202	.102	.029	.196	.101	.029	.190	.099	.029	
8.0	.197	.096	.027	.194	.096	.027	.188	.094	.027	.183	.092	.027	.177	.091	.027	
9.0	.184	.089	.025	.181	.088	.025	.176	.087	.025	.171	.086	.024	.166	.084	.024	
10.0	.172	.083	.023	.170	.082	.023	.165	.081	.023	.160	.080	.023	.156	.078	.022	

pcc	80%			70%			50%			30%			10%			0
pw	50%	30%	10%	50%	30%	10%	50%	30%	10%	50%	30%	10%	50%	30%	10%	0
pfc	20%			20%			20%			20%			20%			0
RCR	RCR:Room Cavity Ratio						Ceiling Cavity Exitance Coefficients(CCEC)									
0.0	.190	.190	.190	.163	.163	.163	.111	.111	.111	.064	.064	.064	.020	.020	.020	
1.0	.184	.156	.130	.157	.134	.112	.108	.092	.077	.062	.053	.045	.020	.017	.015	
2.0	.178	.132	.093	.152	.113	.080	.104	.078	.056	.060	.046	.033	.019	.015	.011	
3.0	.171	.115	.070	.146	.099	.060	.100	.069	.042	.058	.040	.025	.019	.013	.008	
4.0	.163	.102	.054	.140	.088	.047	.096	.061	.033	.056	.036	.020	.018	.012	.006	
5.0	.155	.091	.044	.134	.079	.038	.092	.055	.027	.053	.032	.016	.017	.011	.005	
6.0	.148	.083	.037	.127	.072	.032	.088	.050	.023	.051	.030	.013	.016	.010	.004	
7.0	.141	.076	.031	.121	.066	.027	.084	.046	.019	.049	.027	.012	.016	.009	.004	
8.0	.134	.071	.027	.115	.061	.024	.080	.043	.017	.046	.025	.010	.015	.008	.003	
9.0	.127	.066	.024	.110	.057	.021	.076	.040	.015	.044	.024	.009	.014	.008	.003	
10.0	.121	.061	.021	.104	.053	.019	.072	.037	.013	.042	.022	.008	.014	.007	.003	

C Range: 0 - 360DEG
 C Interval: 22.5DEG
 Test Speed: HIGH
 Temperature:25.3DEG
 Operators:
 Test Date:2025-08-20

γ Range: 0 - 90DEG
 γ Interval: 1.0DEG
 Test System:EVERFINE GO-2000A_V1 SYSTEM V2.0.406.10
 Humidity:65.0%
 Test Distance:11.700m [K=1.0000]
 Remarks:

UGR(Unified Glare Rating) Table

Test:U:229.65V I:0.2537A P:57.346W PF:0.9842 Freq:49.99Hz Lamp Flux:4958.42x1 lm											
NAME:					TYPE:			WEIGHT:			
SPEC.:					DIM.: 1285*48*77			SERIAL No.:			
MFR.:					SUR.:1.00*0.021			Shielding Angle:			
ceiling/cavity	0.7	0.7	0.5	0.5	0.3	0.7	0.7	0.5	0.5	0.3	
walls	0.5	0.3	0.5	0.3	0.3	0.5	0.3	0.5	0.3	0.3	
working plane	0.2	0.2	0.2	0.2	0.2	0.2	0.2	0.2	0.2	0.2	
Room dimensions		Viewed crosswise					Viewed endwise				
x = 2H y = 2H	30.2	31.9	30.5	32.1	32.3	25.3	26.9	25.5	27.1	27.3	
	3H	33.0	34.5	33.3	34.7	35.0	26.2	27.7	26.5	28.0	28.2
	4H	34.1	35.6	34.5	35.9	36.2	26.5	28.0	26.8	28.2	28.5
	6H	35.0	36.4	35.3	36.6	36.9	26.7	28.1	27.1	28.4	28.7
	8H	35.1	36.5	35.5	36.8	37.1	26.8	28.1	27.1	28.4	28.7
	12H	35.2	36.5	35.5	36.8	37.1	26.8	28.1	27.2	28.4	28.7
4H	2H	30.8	32.2	31.1	32.5	32.8	27.5	29.0	27.8	29.2	29.5
	3H	33.8	35.1	34.1	35.4	35.7	28.7	30.0	29.1	30.4	30.7
	4H	35.2	36.4	35.6	36.7	37.0	29.2	30.4	29.6	30.7	31.0
	6H	36.2	37.2	36.6	37.6	38.0	29.4	30.5	29.9	30.9	31.3
	8H	36.4	37.4	36.8	37.8	38.2	29.5	30.5	29.9	30.9	31.3
	12H	36.5	37.4	36.9	37.8	38.2	29.6	30.5	30.0	30.9	31.3
8H	4H	35.5	36.5	35.9	36.9	37.3	31.0	32.0	31.4	32.4	32.8
	6H	36.7	37.6	37.2	38.0	38.4	31.7	32.5	32.1	32.9	33.3
	8H	37.1	37.8	37.6	38.3	38.7	31.8	32.6	32.3	33.0	33.5
	12H	37.2	37.9	37.7	38.4	38.8	31.9	32.6	32.4	33.0	33.5
12H	4H	35.5	36.4	35.9	36.8	37.2	31.3	32.3	31.8	32.7	33.1
	6H	36.8	37.6	37.3	38.0	38.5	32.3	33.1	32.8	33.5	33.9
	8H	37.3	37.9	37.7	38.4	38.8	32.6	33.3	33.1	33.7	34.2
Variations with the observer position at spacings:											
S = 1.0H	+ 0.1 / - 0.1					+ 0.1 / - 0.2					
1.5H	+ 0.1 / - 0.2					+ 0.2 / - 0.4					
2.0H	+ 0.2 / - 0.4					+ 0.4 / - 0.5					

CIE Pub.117, 4958 lm Total Lamp Luminous Flux Corrected ($8\log(F/F_0) = 5.6$)

C Range: 0 - 360DEG
 C Interval: 22.5DEG
 Test Speed: HIGH
 Temperature: 25.3DEG
 Operators:
 Test Date: 2025-08-20

γ Range: 0 - 90DEG
 γ Interval: 1.0DEG
 Test System: EVERFINE GO-2000A_V1 SYSTEM V2.0.406.10
 Humidity: 65.0%
 Test Distance: 11.700m [K=1.0000]
 Remarks:

UTILIZATION FACTORS TABLE

Test:U:229.65V I:0.2537A P:57.346W PF:0.9842 Freq:49.99Hz Lamp Flux:4958.42x1 lm		
NAME:	TYPE:	WEIGHT:
SPEC.:	DIM.: 1285*48*77	SERIAL No.:
MFR.:	SUR.:1.00*0.021	Shielding Angle:

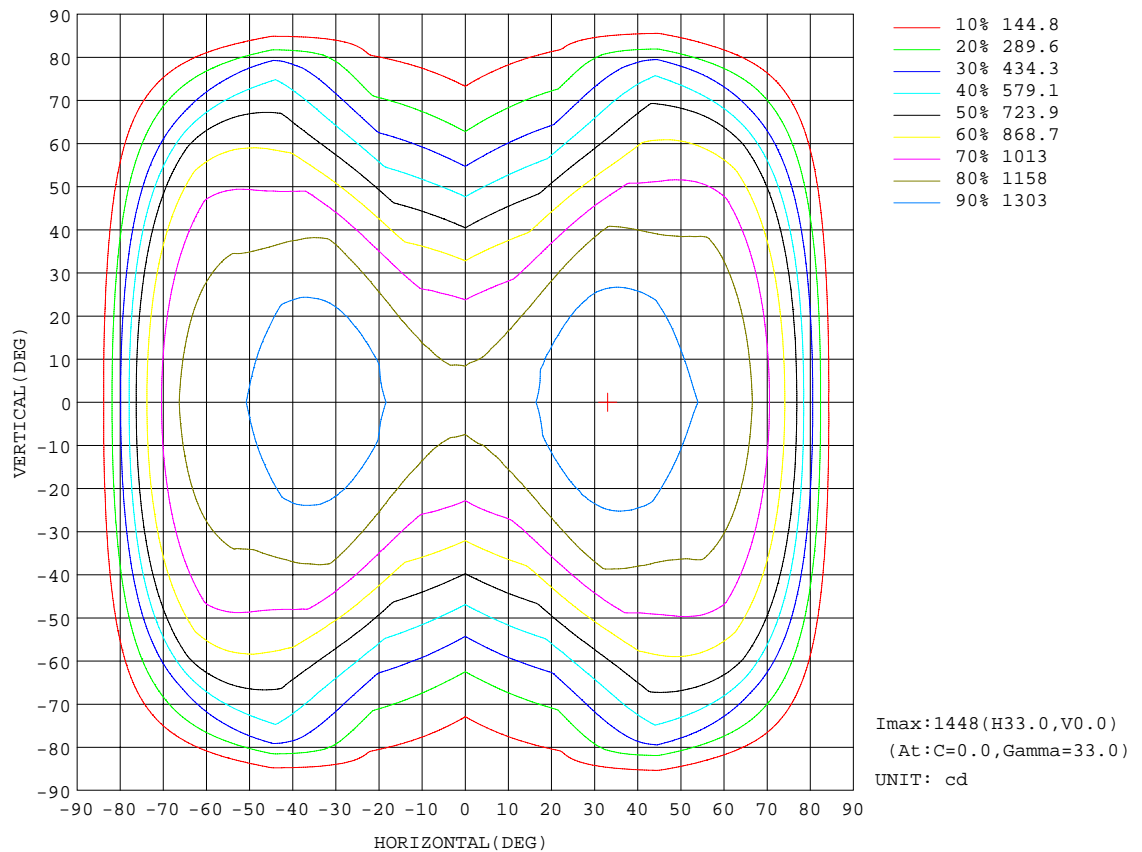
REFLECTANCE										
Ceiling	0.8	0.8	0.8	0.7	0.7	0.7	0.5	0.5	0.5	0
Walls	0.7	0.5	0.3	0.7	0.5	0.3	0.7	0.5	0.3	0
Working plane	0.2	0.2	0.2	0.2	0.2	0.2	0.2	0.2	0.2	0
ROOM INDEX	UTILIZATION FACTORS(PERCENT) $k(RI) \times RCR = 5$									
$k = 0.60$	52	40	32	52	40	32	50	39	32	25
0.80	62	49	41	61	49	41	59	48	41	33
1.00	70	58	50	69	57	50	67	59	49	41
1.25	78	66	58	76	65	57	73	64	57	48
1.50	83	72	64	81	71	63	78	69	62	54
2.00	91	81	73	89	79	72	85	77	71	62
2.50	95	86	79	93	85	78	89	82	76	67
3.00	99	91	84	97	89	83	92	86	81	72
4.00	104	97	91	101	95	90	97	92	87	78
5.00	107	101	96	104	99	94	99	95	91	82
ROOM INDEX	UF(total)									Direct
According to DIN EN 13032-2 2004			Suspended					SHRNOM = 1.25		

C Range: 0 - 360DEG
 C Interval: 22.5DEG
 Test Speed: HIGH
 Temperature:25.3DEG
 Operators:
 Test Date:2025-08-20

γ Range: 0 - 90DEG
 γ Interval: 1.0DEG
 Test System:EVERFINE GO-2000A_V1 SYSTEM V2.0.406.10
 Humidity:65.0%
 Test Distance:11.700m [K=1.0000]
 Remarks:

ISOCANDELA DIAGRAM

Test:U:229.65V I:0.2537A P:57.346W PF:0.9842 Freq:49.99Hz Lamp Flux:4958.42x1 lm		
NAME:	TYPE:	WEIGHT:
SPEC.:	DIM.: 1285*48*77	SERIAL No.:
MFR.:	SUR.:1.00*0.021	Shielding Angle:

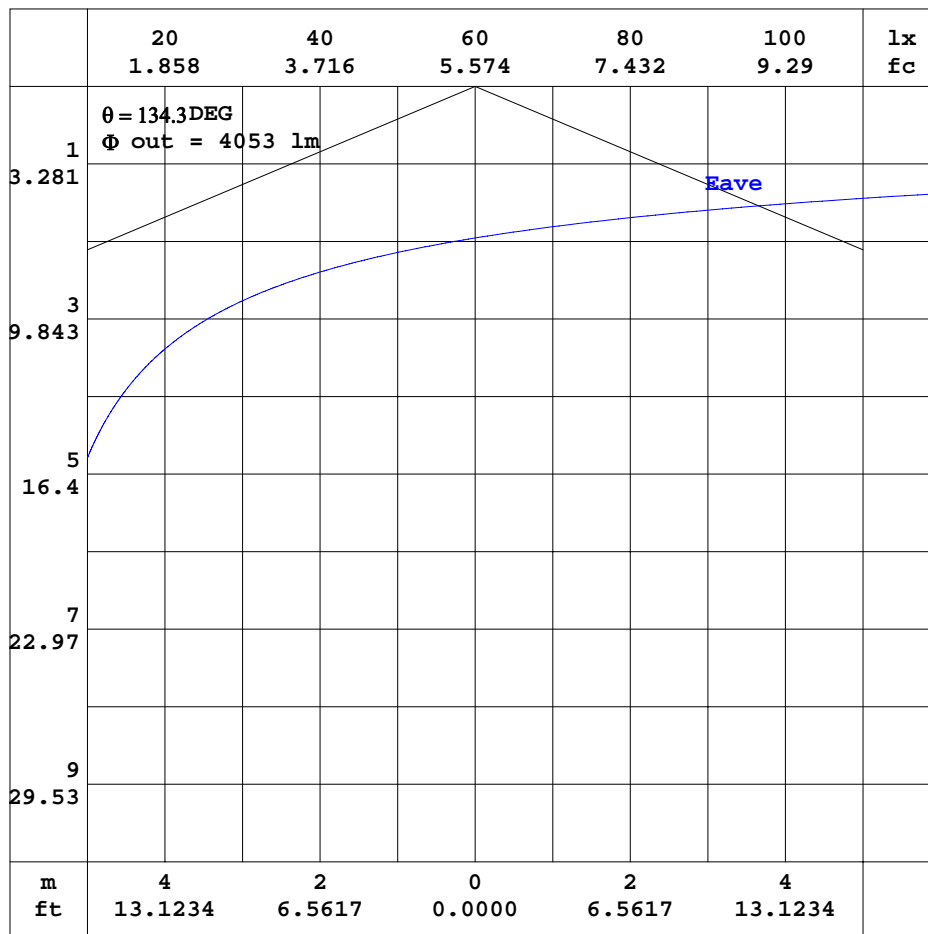


C Range: 0 - 360DEG
C Interval: 22.5DEG
Test Speed: HIGH
Temperature:25.3DEG
Operators:
Test Date:2025-08-20

γ Range: 0 - 90DEG
 γ Interval: 1.0DEG
Test System:EVERFINE GO-2000A_V1 SYSTEM V2.0.406.10
Humidity:65.0%
Test Distance:11.700m [K=1.0000]
Remarks:

AAI CURVES

Test:U:229.65V I:0.2537A P:57.346W PF:0.9842 Freq:49.99Hz Lamp Flux:4958.42x1 lm		
NAME:	TYPE:	WEIGHT:
SPEC.:	DIM.: 1285*48*77	SERIAL No.:
MFR.:	SUR.:1.00*0.021	Shielding Angle:



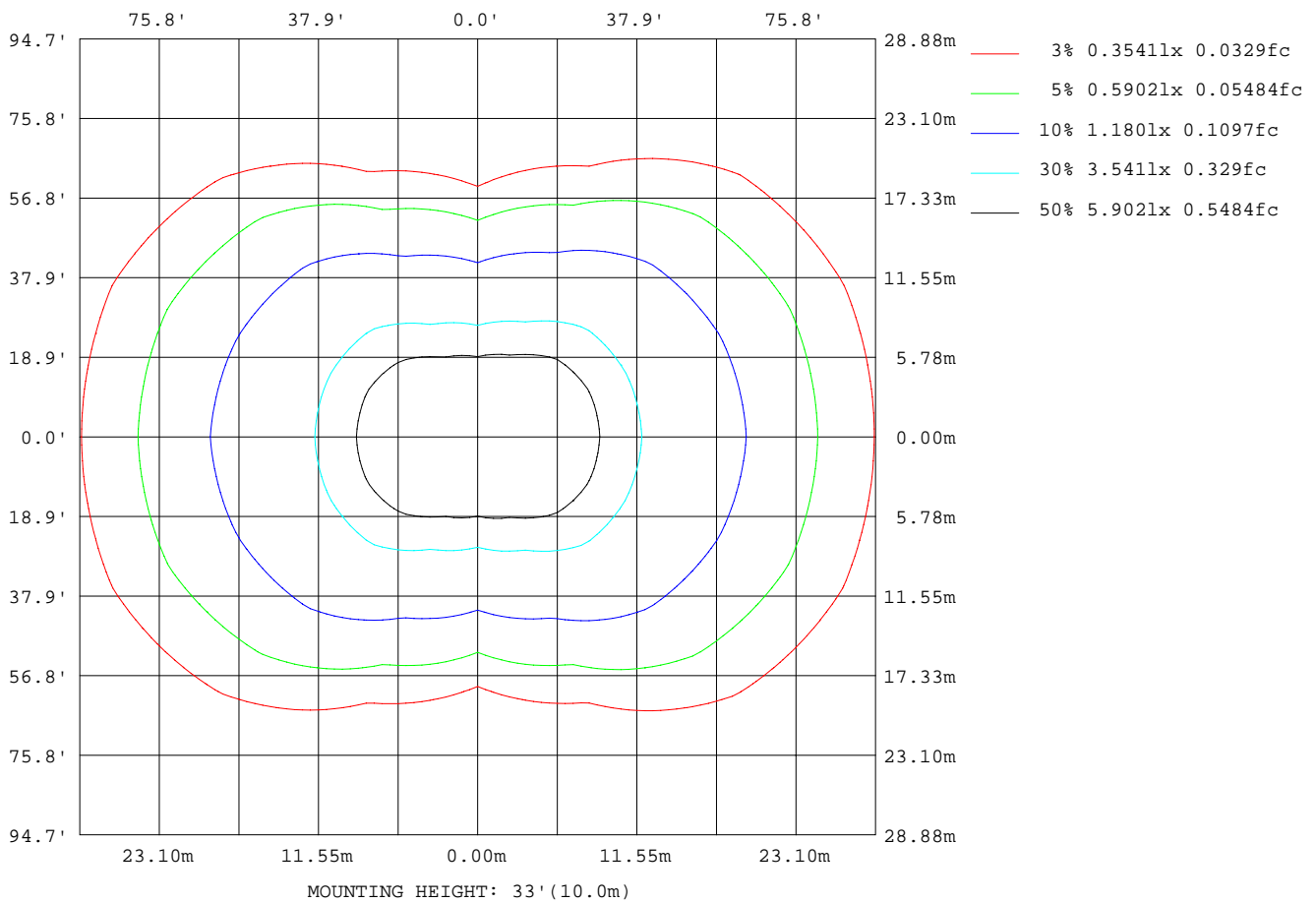
Note: The Curves indicate the illuminated area and the average illumination when the luminaire is at different distance.

C Range: 0 - 360DEG
C Interval: 22.5DEG
Test Speed: HIGH
Temperature: 25.3DEG
Operators:
Test Date: 2025-08-20

γ Range: 0 - 90DEG
 γ Interval: 1.0DEG
Test System: EVERFINE GO-2000A_V1 SYSTEM V2.0.406.10
Humidity: 65.0%
Test Distance: 11.700m [K=1.0000]
Remarks:

ISOLUX DIAGRAM

Test:U:229.65V I:0.2537A P:57.346W PF:0.9842 Freq:49.99Hz Lamp Flux:4958.42x1 lm		
NAME:	TYPE:	WEIGHT:
SPEC.:	DIM.: 1285*48*77	SERIAL No.:
MFR.:	SUR.:1.00*0.021	Shielding Angle:



C Range: 0 - 360DEG
C Interval: 22.5DEG
Test Speed: HIGH
Temperature: 25.3DEG
Operators:
Test Date: 2025-08-20

γ Range: 0 - 90DEG
 γ Interval: 1.0DEG
Test System: EVERFINE GO-2000A_V1 SYSTEM V2.0.406.10
Humidity: 65.0%
Test Distance: 11.700m [K=1.0000]
Remarks:

LED Avg.L Report

Test:U:229.65V I:0.2537A P:57.346W PF:0.9842 Freq:49.99Hz Lamp Flux:4958.42x1 lm		
NAME:	TYPE:	WEIGHT:
SPEC.:	DIM.: 1285*48*77	SERIAL No.:
MFR.:	SUR.:1.00*0.021	Shielding Angle:

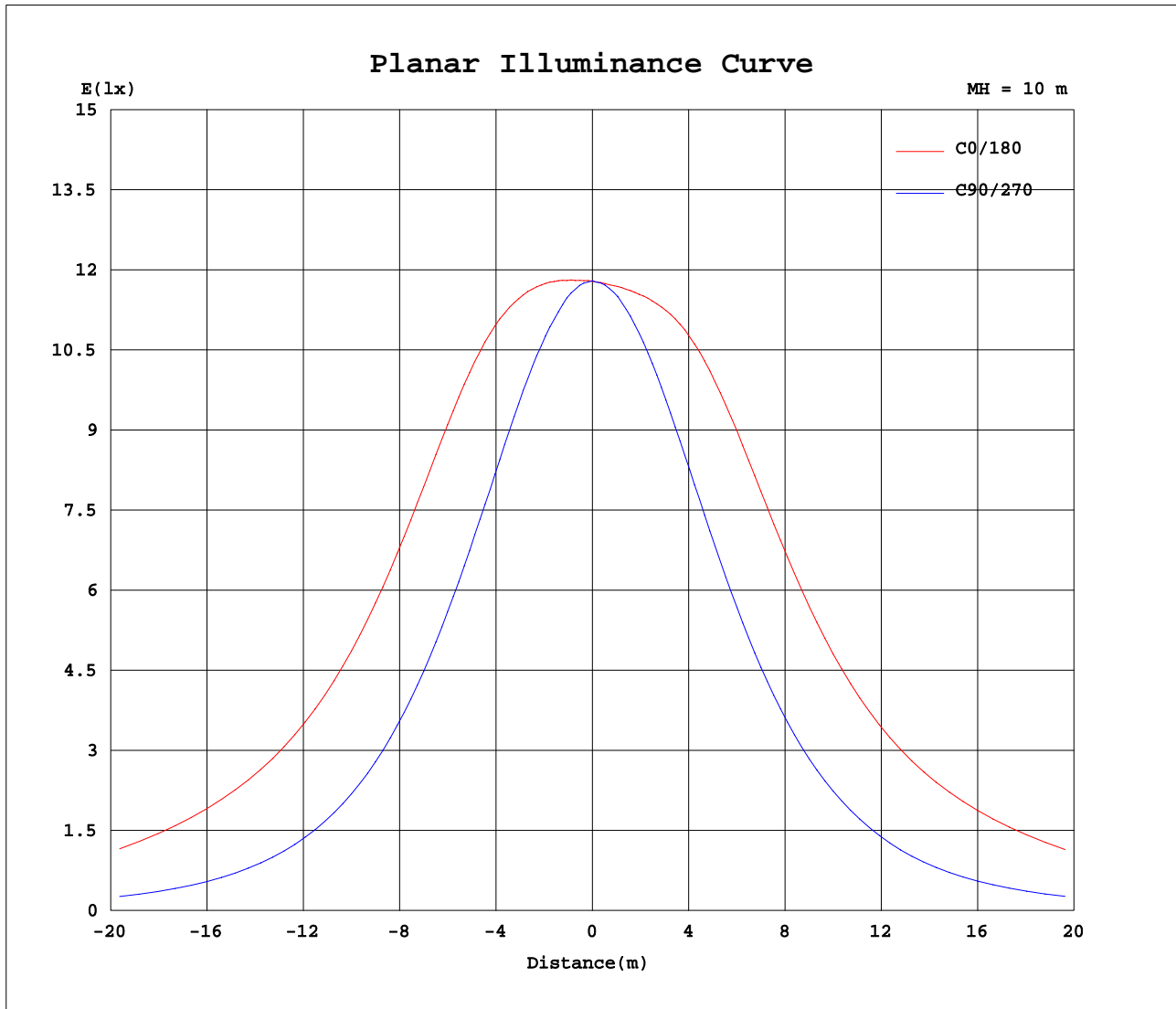
AvgL	cd/m2
L_0~180(65)av	129695
L_0~180(75)av	146033
L_0~180(85)av	48798
L_90~270(65)av	27315
L_90~270(75)av	21907
L_90~270(85)av	17997
L_45(65)av	96842
L_45(75)av	123141
L_45(85)av	120478

Standard: GB/T 29293-2012

C Range: 0 - 360DEG
C Interval: 22.5DEG
Test Speed: HIGH
Temperature:25.3DEG
Operators:
Test Date:2025-08-20

γ Range: 0 - 90DEG
γ Interval: 1.0DEG
Test System:EVERFINE GO-2000A_V1 SYSTEM V2.0.406.10
Humidity:65.0%
Test Distance:11.700m [K=1.0000]
Remarks:

Planar Illuminance Curve



C Range: 0 - 360DEG
C Interval: 22.5DEG
Test Speed: HIGH
Temperature: 25.3DEG
Operators:
Test Date: 2025-08-20

γ Range: 0 - 90DEG
 γ Interval: 1.0DEG
Test System: EVERFINE GO-2000A_V1 SYSTEM V2.0.406.10
Humidity: 65.0%
Test Distance: 11.700m [K=1.0000]
Remarks:

```

γ Range: 0 - 90DEG
γ Interval: 1.0DEG
Test System:EVERFINE GO-2000A_V1 SYSTEM V2.0.406.10
Humidity:65.0%
Test Distance:11.700m [K=1.0000]
Remarks:

```